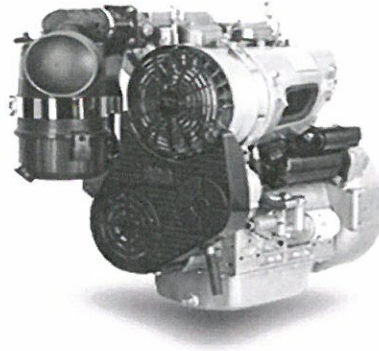


SUN2105E2.GEN

Engine	SUN2105E2.GEN
Displacement (l)	2.0
Cylinders	2 1
Injection	Mech.
Max Power (1500rpm)	19 kW
Max Power (1800rpm)	22 kW
Weight	245 Kg
Emission	Stage II



The **SUN2105E2.GEN** is a 4-stroke, naturally aspirated diesel engine with direct injection and mechanical pump.

This air-cooled engine is suitable for use in the most difficult climatic conditions thanks to its **reliability, simplicity of use and ease of maintenance. The reduced fuel consumption and noise levels** which characterize this engine are appreciated by end-users, as are its **compact dimensions** and absence of a water-cooled cooling circuit which make the **engine easy to install.**

The GEN version includes the starter motor, battery charger alternator, filters and oil sensor and can be coupled with any alternator. It is Stage II emissions compliant.

A wide range of optional accessories, including a manual starter kit, makes it possible to personalize the product to meet the end-user's requirements.

